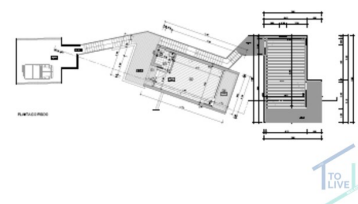
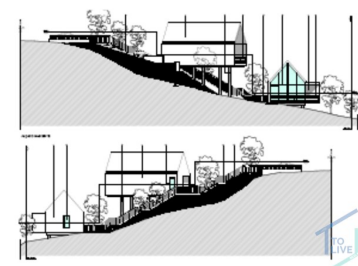




Serra e Junceira - Land



Land Area (m²)

95 000 €
(EUR €)

EXCLUSIVE LAND FOR CONSTRUCTION NEXT TO CASTELO DE BODE RESERVOIR

EXCLUSIVE LAND FOR CONSTRUCTION NEXT TO CASTELO DE BODE RESERVOIR

APPROVED PROJECT AND PAID LICENSES

We present a unique opportunity next to the stunning Castelo de Bode Reservoir! This rustic land, with **800m²**, already has a **project approved** by the Municipality of Tomar and **all licenses raised and paid**, allowing it to start construction immediately.



Gonçalo Ferreira

912378191 ²

davidgoncaloferreiralda@gmail.com

T +351 249 157 630 ¹ · T +351 916 356 181 ² · E geral@tolive.pt

Av. Combatentes da Grande Guerra, 13A
AMI 24759

¹ (Call to national fixed network) | ² (Call to national mobile network)



VCP437

Reference

Scan the QR code to view the property



The location is simply perfect: surrounded by nature, with **direct access to the water** and a breathtaking view over the river, it provides a peaceful and exclusive lifestyle. At the same time, it is just a step away from the city of Tomar, ensuring all the convenience and accessibility.

INFRASTRUCTURE AND AMENITIES

- **Land with 800m²**
- **Panoramic view over Albufeira**
- **Infrastructure already available:** electricity, company water and fiber optics
- **Privileged area for water sports, walks by the river and leisure time**

If you are looking for a refuge by the water, in one of the most privileged locations in Central Portugal, this is the perfect opportunity.

📅 **Book your visit now with Viver no Centro de Portugal and start making this dream come true!**

Property Features

- Proximity: Mountain, City, Open field
- Ampla Oferta de Serviços
- Quiet Location
- Optical fibre
- Septic tank
- Praia Fluviais
- Views: River view, Garden view
- Drive way
- Mains water
- Energetic certification: Exempt



Gonçalo Ferreira

912378191 ²

davidgoncaloferreiralda@gmail.com

T +351 249 157 630 ¹ · T +351 916 356 181 ² · E geral@tolive.pt

**Av. Combatentes da Grande Guerra, 13A
AMI 24759**

¹ (Call to national fixed network) | ² (Call to national mobile network)