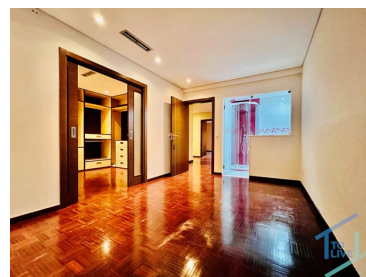
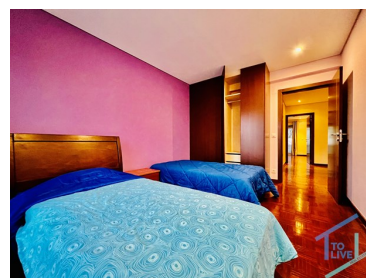




## Tomar (são João Baptista) e Santa Maria Dos Olivais - Townhouse



4   
 3   
 378   
 190   
   
**1 700 € / Month** (EUR €)

### 4 bedroom for rent in Tomar

## 4 bedroom property in Tomar

Fantastic property in the city of the Templars, remodeled with high quality materials and with great areas!

It consists of a garage that can accommodate two cars, a laundry room, a space with a Turkish bath and storage space.

The ground floor consists of a living room, fireplace with wood burning stove, a balcony overlooking the whole city. It has a bedroom with wardrobe, bathroom with shower, equipped kitchen and a great



**Agência Tomar**

+351 249 157 630 <sup>1</sup> · +351 249 157 630 <sup>1</sup>

geral@tolive.pt

T +351 249 157 630 <sup>1</sup> · T +351 916 356 181 <sup>2</sup> · E geral@tolive.pt

Av. Combatentes da Grande Guerra, 13A  
AMI 24759

<sup>1</sup> (Call to national fixed network) | <sup>2</sup> (Call to national mobile network)



VCP214/23

Reference

Scan the QR code to view the property



dining room with fireplace that gives access to a terrace with a barbecue and a small backyard with fruit trees, pleasant resting space.

Going up to the 1st floor, there is a suite with a private bathroom and a fantastic closet, 2 bedrooms with wardrobes and balcony and a bathroom with shower. It also has a large attic with a fireplace. The villa is equipped with air conditioning, solar panels, has double glazing, electric shutters, natural gas and fiber optics. It has good sun exposure!

Here you can find the pleasure between the nature and the sea, the mountain, the snow and the lakes, delight yourself with our magnificent gastronomy and enrich your soul in an unparalleled cultural heritage, in the largest and most diversifiable tourist region of Portugal.... More than a way of life, it is quality of life!

### WHY YOU SHOULD you LIVE IN THIS REGION

A quantidade e qualidade das vias de comunicações que temos ao nosso redor, permitem uma deslocação rápida e eficaz a todos os locais de maior interesse, senão veja-se:

The quantity and quality of the communication routes that we have surrounding us, allows gives you the opportunity to be closer to:

- 10 minutes from the access to the A23,
- 20 minutes from the Sanctuary of Fátima;
- 45 minutes from Nazaré (beaches);
- 40 minutes from Coimbra;
- 1h15 from Lisbon Airport;
- 2 hours from Porto Airport;

This is still an economic region of the country to live in, both in terms of the cost of acquiring real estate, building and rebuilding real estate and even the cost of living.

Don't let this opportunity go away, contact us for more information and to schedule your visit!



**Agência Tomar**

+351 249 157 630 <sup>1</sup> · +351 249 157 630 <sup>1</sup>

geral@tolive.pt

**T +351 249 157 630 <sup>1</sup> · T +351 916 356 181 <sup>2</sup> · E geral@tolive.pt**

**Av. Combatentes da Grande Guerra, 13A  
AMI 24759**

<sup>1</sup> (Call to national fixed network) | <sup>2</sup> (Call to national mobile network)



VCP214/23

Reference

Scan the QR code to view the property



## Property Features

- Air conditioning
- Dishwashing machine
- Fitted wardrobes
- Alpendre
- Espaços Verdes
- Proximity: Shopping, Restaurants, City, Open field, Hospital, Pharmacy, Public Transport, Schools, Public Swimming Pools, Playground
- Ampla Oferta de Serviços
- Quiet Location
- Electric garage gate
- Conservatory
- Storage / utility room
- Security alarm
- Security door
- Barbecue
- Balcony
- Mains water
- Main drainage
- Energetic certification: C
- Equipped kitchen
- Fireplace
- Walk-in wardrobe
- Garden
- Terreno
- Praia Fluviais
- Views: City view, Garden view
- Garage
- Laundry
- Basement
- Double glazing
- Electric shutters
- Bread oven
- Terrace
- Attic
- Sealed land area
- Uninterrupted views



**Agência Tomar**

+351 249 157 630 <sup>1</sup> · +351 249 157 630 <sup>1</sup>

geral@tolive.pt

**T +351 249 157 630 <sup>1</sup> · T +351 916 356 181 <sup>2</sup> · E geral@tolive.pt**

**Av. Combatentes da Grande Guerra, 13A  
AMI 24759**

<sup>1</sup> (Call to national fixed network) | <sup>2</sup> (Call to national mobile network)