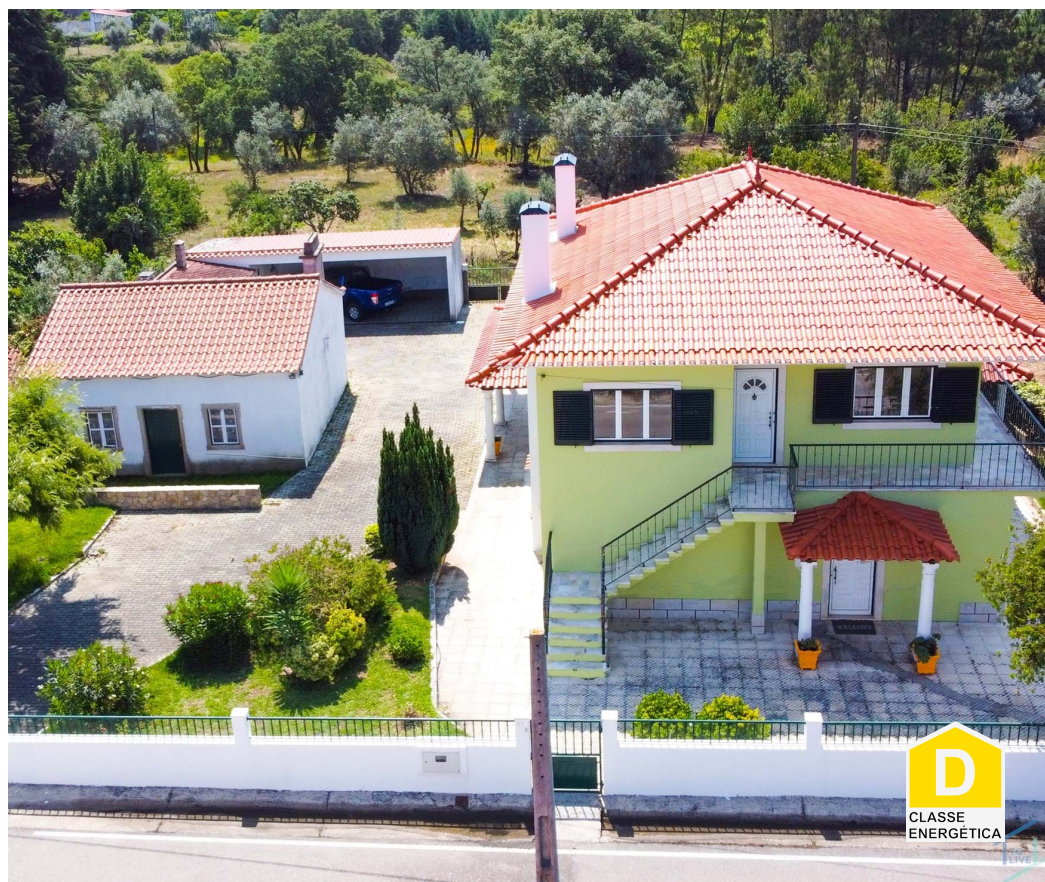




Serra e Junceira - Country house



4
 2
 198
 1279

Bedrooms

Bathrooms

Area (m²)

Land Area (m²)

Garage

250 000 €

(EUR €)

House T3 + House T1 10 minutes from Tomar and 3 minutes from Albufeira de Castelo de Bode

House T3 + House T1 10 minutes from Tomar and 3 minutes from Albufeira de Castelo de Bode

This charming property offers a fantastic villa with a plot of land of 1222 m², set in a quiet and quiet village. It has all the necessary amenities to enjoy a quiet life in the countryside, with easy access to the main thoroughfares such as the A13, A23 and A1. It is conveniently located just a 10-minute drive from Tomar and 3 minutes from the river beaches of the Castelo de Bode reservoir.

Upon entering the property you are greeted by a well-kept garden, filled with varied trees, which



Agência Tomar

+351 249 157 630 ¹ · +351 249 157 630 ¹

geral@tolive.pt

T +351 249 157 630 ¹ · T +351 916 356 181 ² · E geral@tolive.pt

Av. Combatentes da Grande Guerra, 13A
AMI 24759

¹ (Call to national fixed network) | ² (Call to national mobile network)



VCP155/23

Reference

Scan the QR code to view the property



beautify the environment. The automatic gate allows easy access to the property.

The main villa is distributed over two floors. On the ground floor is a spacious and well-equipped kitchen, which leads to a bright dining room, providing a cosy atmosphere to enjoy family meals. Adjacent to the dining room is an elegant living room with an imposing fireplace that stands out as the main point, offering warmth and comfort during the colder months. A spacious entrance hall leads to a bathroom with shower, providing additional convenience for residents and guests alike.

On the first floor, there are four bedrooms, all with wooden parquet floors, providing a warm and comfortable atmosphere. One of the rooms features a running balcony and air conditioning, providing a quiet space to enjoy panoramic views of the surrounding countryside. In addition to the bedrooms, there is a bathroom with shower. An additional room on this floor can be used as a walk-in closet or transformed into another bathroom, as it has all the necessary connections.

The villa has aluminum windows with double glazing, providing thermal and acoustic insulation. In addition, it has fiber optic connection, ensuring fast access to high-speed internet.

Outside the property, there is another rustic villa, where stone and wood predominate, creating a charming atmosphere. This villa offers the possibility of creating an additional bedroom, a bathroom and an "open-space" space, which can be used as local accommodation or as a house to receive friends and family.

In addition, there are several outdoor facilities, such as a barbecue with a wood-burning oven, perfect for enjoying al fresco dining. There is also an annex that serves as a workshop and a shed for parking two cars, offering protection for the vehicles.

Overall, this charming property offers a fantastic villa with a wide plot, a well and a host of outdoor amenities. Its quiet but convenient location provides peaceful country life, with easy access to nearby services and beautiful river beaches.



Agência Tomar

+351 249 157 630 ¹ · +351 249 157 630 ¹

geral@tolive.pt

T +351 249 157 630 ¹ · T +351 916 356 181 ² · E geral@tolive.pt

**Av. Combatentes da Grande Guerra, 13A
AMI 24759**

¹ (Call to national fixed network) | ² (Call to national mobile network)



VCP155/23

Reference

Scan the QR code to view the property



Property Features

- Fireplace
- Proximity: Mountain, Restaurants, City, Open field, Hospital, Pharmacy, Public Transport, Schools
- Views: Countryside views, Garden view
- Drive way
- Double glazing
- Barbecue
- Balcony
- Mains water
- Septic tank
- Garden
- Praia Fluviais
- Quiet Location
- Garage
- Bread oven
- Terrace
- Guest cottage
- Well
- Energetic certification: D



Agência Tomar

+351 249 157 630 ¹ · +351 249 157 630 ¹

geral@tolive.pt

T +351 249 157 630 ¹ · T +351 916 356 181 ² · E geral@tolive.pt

**Av. Combatentes da Grande Guerra, 13A
AMI 24759**

¹ (Call to national fixed network) | ² (Call to national mobile network)