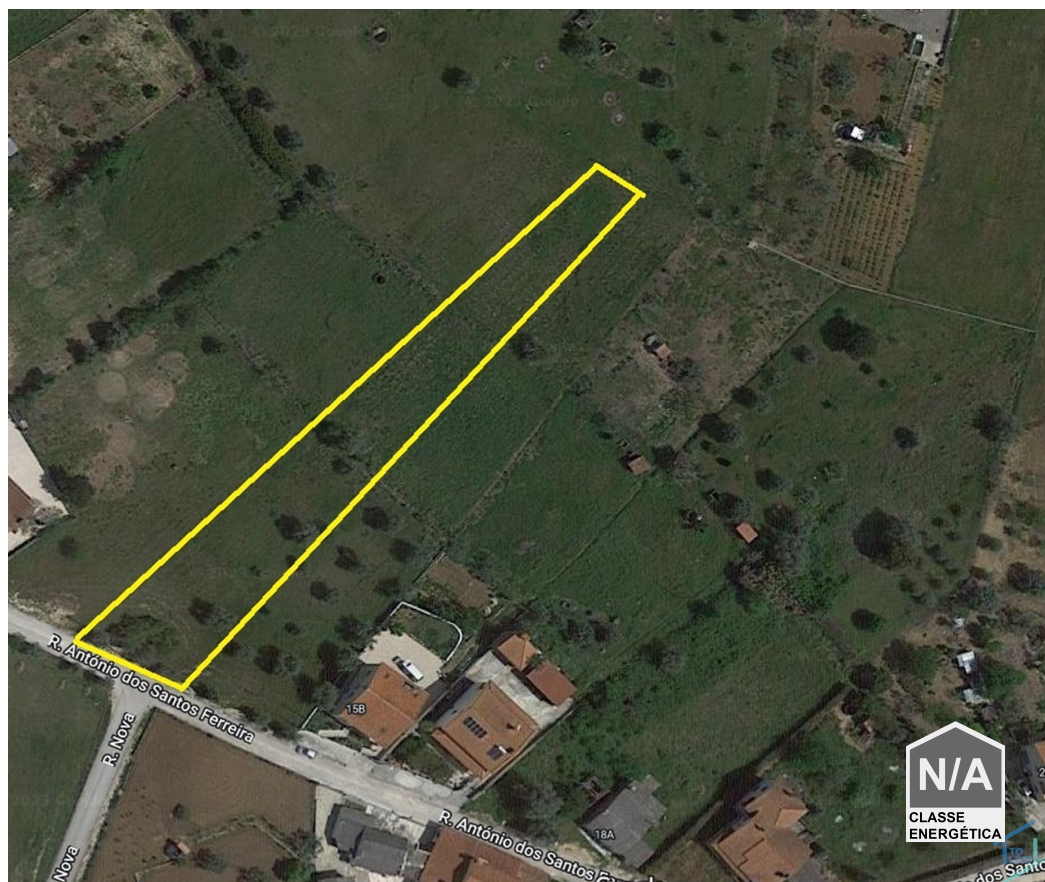




## Tomar (são João Baptista) e Santa Maria Dos Olivais - Land



 **300**  
Area (m²)

 **2695**  
Land Area (m²)

**N/A**  
CLASSE  
ENERGÉTICA

**57 000 €**  
(EUR €)

Urban Land with 2695 m2 2 minutes from Tomar

## Urban Land with 2695 m2 2 minutes from Tomar

Fantastic land ideal for construction, located just 2 minutes from the city center of Tomar, Portugal. This land has a total area of 2695m² and offers a variety of features and amenities that make it attractive to future owners.



**Jose Ferreira**

+351 910340340 <sup>2</sup>

jose.ferreira@vivernocentrodeportugal.com

T +351 249 157 630 <sup>1</sup> · T +351 916 356 181 <sup>2</sup> · E geral@tolive.pt

Av. Combatentes da Grande Guerra, 13A  
AMI 24759

<sup>1</sup> (Call to national fixed network) | <sup>2</sup> (Call to national mobile network)



VCP145/23

Reference

Scan the QR code to view the property



The land is situated in a quiet area, providing a peaceful and relaxing environment, away from the hustle and bustle of the city. The proximity to the center of Tomar ensures easy access to all essential services and amenities such as supermarkets, schools, hospitals, restaurants and shops.

One of the main advantages of this land is its privileged location. In addition to being close to the city center, it is just a few kilometers from the stunning Castelo de Bode reservoir, which is known for its beautiful river beaches. This proximity offers future owners the opportunity to enjoy outdoor activities such as swimming, fishing and boating in stunning natural surroundings.

The land in question has essential resources for construction, such as water supply, electricity and internet access, available at the end of the site. These infrastructures are fundamental to facilitate and make more convenient the construction of a new property.

In addition, the terrain is flat and offers an unobstructed view of the nature around you. With olive trees and some fruit trees already present, it has a rustic charm and an interesting landscape potential. Future owners can take advantage of these natural features to create a lovely garden or even develop a small orchard.

Another positive point is the possibility of building 300m<sup>2</sup> on the land. This allows future owners to build a spacious home with ample interior and exterior spaces. The generous area also provides opportunities for the creation of leisure areas such as swimming pool, garden, barbecue or even a space for sports activities.

Finally, it is important to note that the land is conveniently located near the motorway accesses, which facilitates mobility and enables quick travel to other areas of the country.

## Property Features

- Proximity: Mountain, Restaurants, City, Open field, Hospital, Pharmacy, Public Transport, Schools
- Views: Countryside views
- Septic tank
- Praia Fluviais
- Mains water
- Energetic certification: Exempt



**Jose Ferreira**

+351 910340340 <sup>2</sup>

jose.ferreira@vivernocentrodeportugal.com

**T +351 249 157 630 <sup>1</sup> · T +351 916 356 181 <sup>2</sup> · E geral@tolive.pt**

**Av. Combatentes da Grande Guerra, 13A  
AMI 24759**

<sup>1</sup> (Call to national fixed network) | <sup>2</sup> (Call to national mobile network)